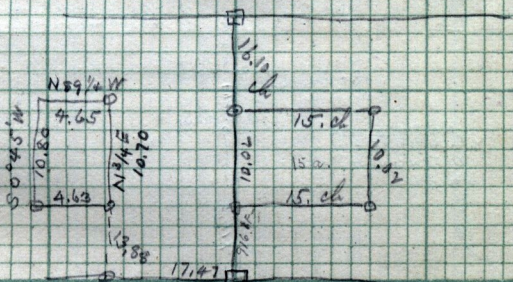


Copy of deed from John Montgomery to James  
 Montgomery. 14<sup>th</sup> Feb 1885 - S-179 - Pt S.W. 1/4  
 Sec 32, T-7-N-R-1-W. Bsq. 13.88 ch N. <sup>5.00</sup> 17.47 ch W  
 of S.E. cor. of 1/4 Sec. N 89° 45' E 10.70 ch, N 89° 1/4' W  
 4.65 ch, S 0° 45' W 10.80 ch E 4.63 ch

Copy of Deed from John Montgomery <sup>5.00</sup> to  
 James Montgomery, Nathaniel Montgomery and Jos.  
 Montgomery, Pt S.E. 1/4 Sec 32, T-7-N-R-1-W,  
 Bsq. 16.10 ch S. of N.W. cor. of 1/4 Sec. E 60. Rods  
 S 10.02 ch W 60 Rods N 10.02 ch to Cng.  
 Nov 16-1889 - 4-1443.



S.W. COR. S.E. 1/4 Sec 32.

T-7-N-R-1-W. chains per inch.

Scale:

James M. Chambers & Mrs. Chambers to Jos. & Alma Montgomery  
 Nov 14<sup>th</sup> 1886 - U. 341 - Bsq. 12.75 ch N. of S.E. cor S.W.  
 1/4 Sec 32 T-7-N-R-1-W. - W. 17.47 ch N 89° E 10.80 ch E 17.33 ch  
 S 10.30 ch to Cng. 18.79 a.